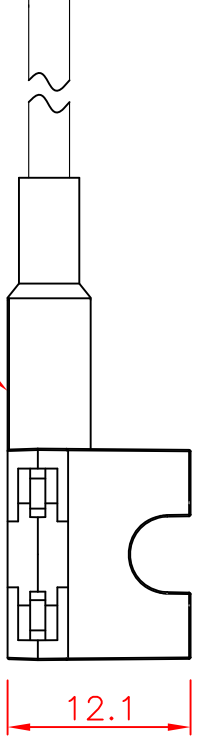
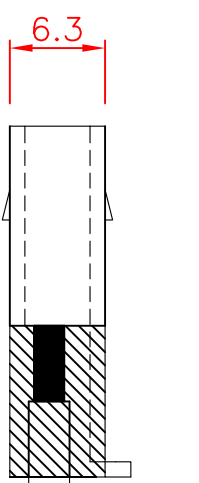
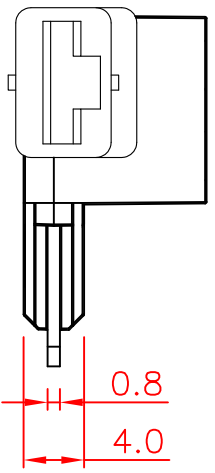
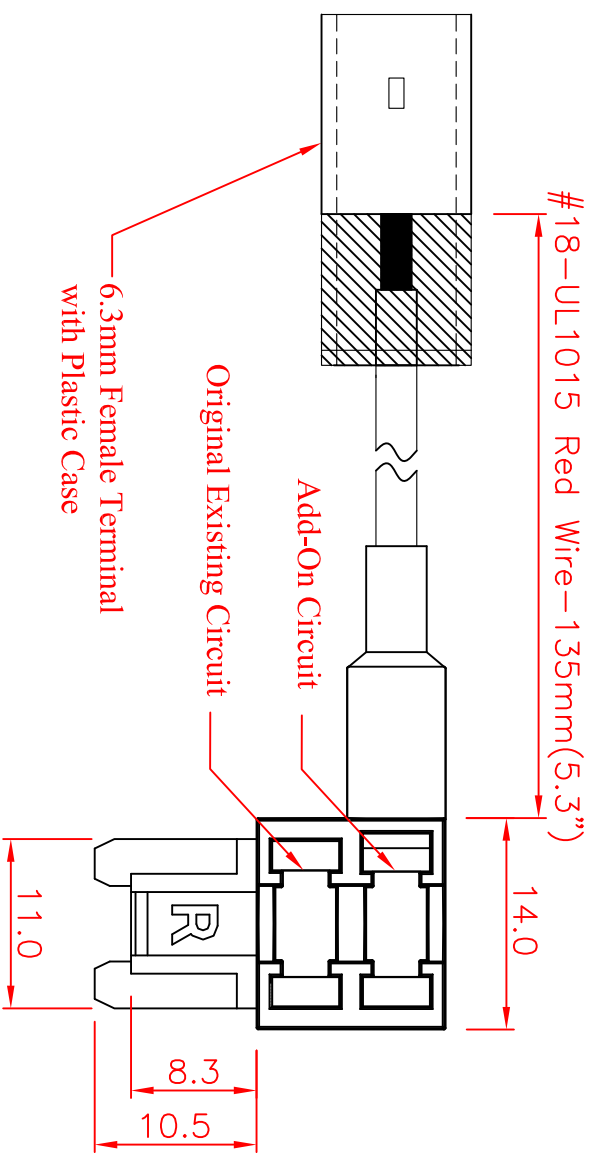


SPECIFICATIONS :

- Suitable Rated Current : Maximum Installation Rating
- Existing Circuit : 30A
- Add-on Circuit : 15A
- Dielectric Strength for 60 seconds : AC1500V Min.
- Insertion & Extraction Force : 1Kg. Min.
- Contact Resistance at 1A DC : 5mΩ Max.
- Insulation Resistance at 500V DC : 100MΩ Min.
- Voltage Drop : 20mV Max.
- Temperature Rise : 50°C Max.
- Molded Parts : Nylon PA66 UL 94V-0, Red
- Terminals : Brass with Tin Plated
- Wire : #18 AWG UL 1015 Red Wire.



Heat Shrink Tubing

Tolerances : Unless Otherwise Specified			
Dimension	Critical To Function	General	
< 1	+/- 0.02	+/- 0.03	
1 ~ 8	+/- 0.1	+/- 0.2	
8 ~ 24.995	+/- 0.15	+/- 0.25	
25 ~ 99.99	+/- 0.2	+/- 0.3	
Angles	+/- 1°	+/- 5°	
Rev	EN	Description	Dwg Ckd Appd Date
B	93092401	Modify the tolerance	Kao Chyi Ku 2004/9/24

Material		Drawn		GLORYTECH TECHNOLOGY CO., LTD. Title: Low Profile Fuse Tap (Right Side Insert Fuse)		A4		GTQD-HLD-1829-1117-401		B	
Finish		Check				Engr		Dwg Size		Sht	
Unless Otherwise Specified Dimensions are mm (inch)		Appd		Scale:		2:1		1		1	
Tolerances:											
.x = 1.0 (.04)											
.xx = 0.5 (.02)											
.xxx = 0.25 (.010)											
Model File Name : Low Profile Fuse Tap ; #18AWG ; Right Side Insert				Date:				2015/5/6			
Drawing File Name : GTQD-HLD-1829-1117-401				Part Number : 1829 1117 401							