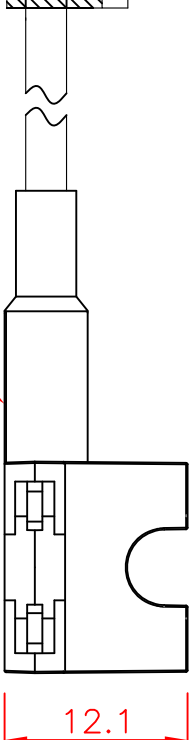
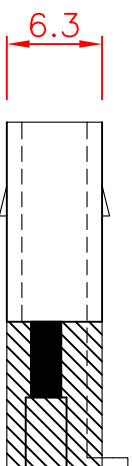
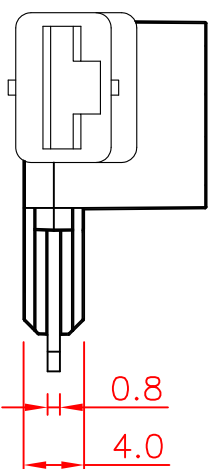
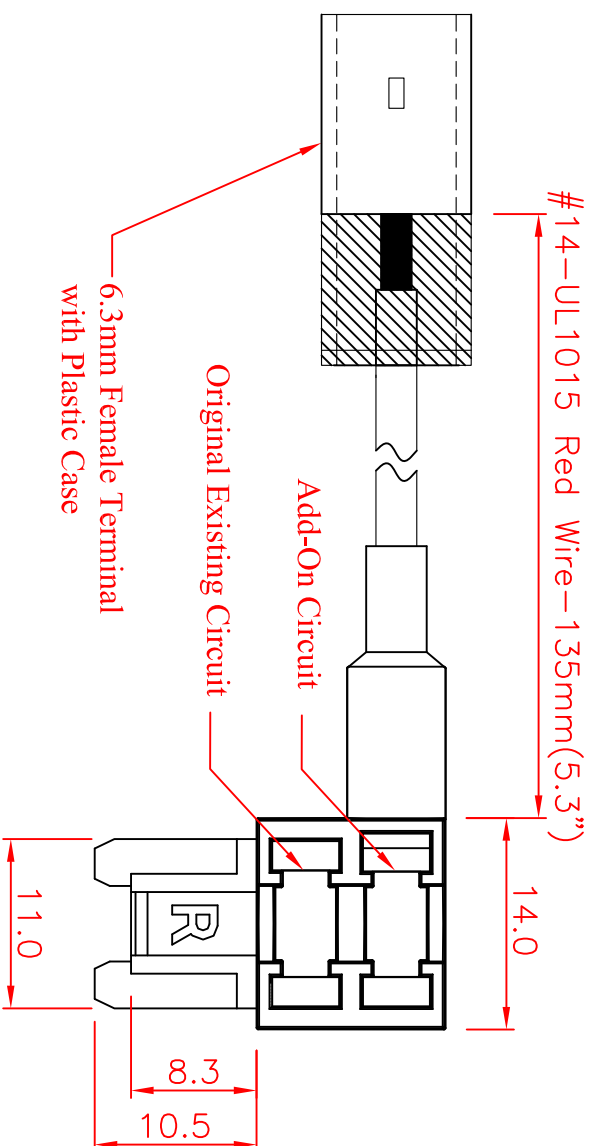


**SPECIFICATIONS :**

- Suitable Rated Current : Maximum Installation Rating
- Existing Circuit : 30A
- Add-on Circuit : 25A
- Dielectric Strength for 60 seconds : AC1500V Min.
- Insertion & Extraction Force : 1Kg. Min.
- Contact Resistance at 1A DC : 5mΩ Max.
- Insulation Resistance at 500V DC : 100MΩ Min.
- Voltage Drop : 20mV Max.
- Temperature Rise : 50°C Max.
- Molded Parts : Nylon PA66 UL 94V-0, Red
- Terminals : Brass with Tin Plated
- Wire : #14 AWG UL 1015 Red Wire.



Heat Shrink Tubing

Tolerances : Unless Otherwise Specified		
Dimension	Critical To Function	General
< 1	+/- 0.02	+/- 0.03
1 ~ 8	+/- 0.1	+/- 0.2
8 ~ 24.995	+/- 0.15	+/- 0.25
25 ~ 99.99	+/- 0.2	+/- 0.3
Angles	+/- 1°	+/- 5°

Rev	EN	Description	Dwg	Ckd	Appd	Date
B	93092401	Modify the tolerance	Kao	Chyi	Ku	2004/9/24

<b>Material</b>		Drawn	<b>GLORYTECH TECHNOLOGY CO., LTD.</b>		
Check		Engr	Title: Low Profile Fuse Tap		
Finish		Appd	(Right Side Insert Fuse)		
Unless Otherwise Specified Dimensions are mm (inch)		Tolerances:		A4	GTQD-HLD-1829-1113-401
.x = 1.0 (.04)		Scale: 2:1		Dwg Size	Sht 1 of 1
.xx = 0.5 (.02)		Model File Name : Low Profile Fuse Tap ; #14AWG ; Right Side Insert		Rev	B
.xxx = 0.25 (.010)		Drawing File Name : GTQD-HLD-1829-1113-401		Date: 2015/5/6	
Part Number : 1829 1113 401		Date:		2015/5/6	