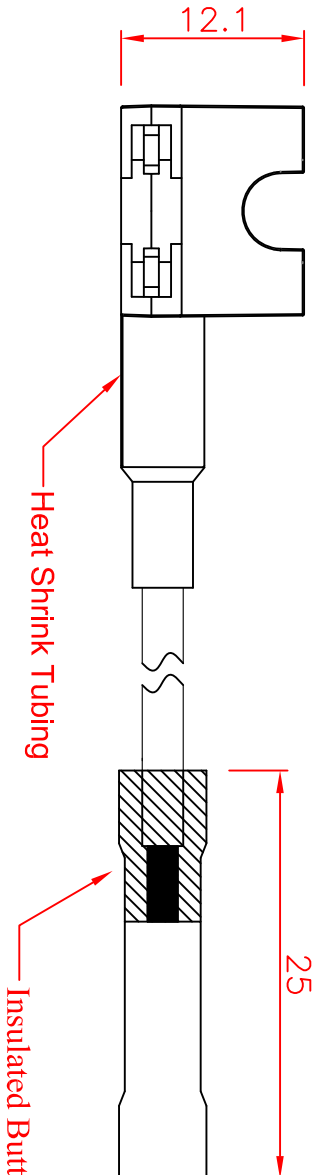
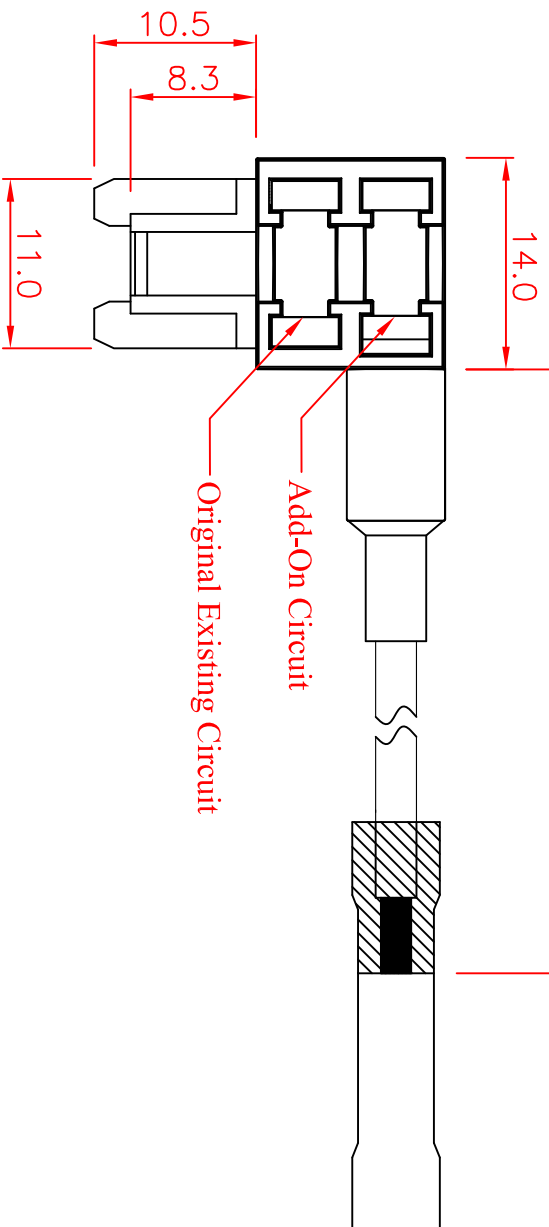
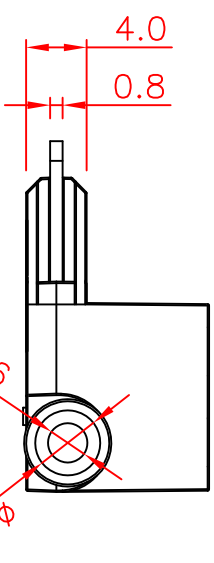


#14-UL1015 Red Wire-135mm(5.3")



Insulated Butt Connector ; PVC PIPE ; Blue



SPECIFICATIONS :

- Suitable Rated Current : Maximum Installation Rating
- Existing Circuit : 30A
- Add-on Circuit : 25A
- Dielectric Strength for 60 seconds : AC1500V Min.
- Insertion & Extraction Force : 1Kg. Min.
- Contact Resistance at 1A DC : 5mΩ Max.
- Insulation Resistance at 500V DC : 100MΩ Min.
- Voltage Drop : 20mV Max.
- Temperature Rise : 50°C Max.
- Molded Parts : Nylon PA66 UL 94V-0, Black
- Terminals : Brass with Tin Plated
- Wire : #14 AWG UL 1015 Red Wire, End With Insulated Crimp-Type coupler Blue Butt Connector.
- **Other color option is available for "Molded Parts" and "Wire"

Tolerances : Unless Otherwise Specified	
Dimension	Critical To Function
< 1	+/-0.02
1 ~ 8	+/- 0.1
8 ~ 24.995	+/- 0.15
25 ~ 99.99	+/- 0.2
Angles	+/- 1°
Rev	EN
93092401	Modify the tolerance
	Dwng Kao
	Ckd Chyi
	Appd Ku
	Date 2004/9/24

Material		Drawn		
Check		Engr		
Appd				
Finish		Title:		
Unless Otherwise Specified		Low Profile Fuse Tap		
Dimensions are mm (inch)		(Left Side Insert Fuse)		
Tolerances:		A4		
.x = 1.0 (.04)		GTQD-HLD-1829-1112-400		
.xx = 0.5 (.02)		A4		
.xxx = 0.25 (.010)		GTQD-HLD-1829-1112-400		
Scale: 2:1		Dwg Size	Sht	1 of 1
Model File Name : Low Profile Fuse Tap ; #14AWG ; Left Side Insert				
Drawing File Name : GTQD-HLD-1829-1112-400				
Part Number : 1829 1112 400		Date:	2015/5/6	
				Rev
				B

GLORYTECH TECHNOLOGY CO., LTD.