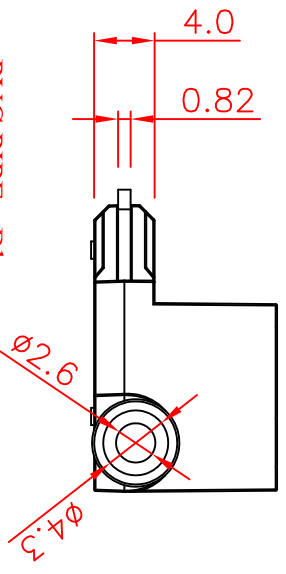


SPECIFICATIONS :
 Suitable Rated Current : MAX. installation Rating up to 20A.
 Dielectric Strength for 60 seconds : AC1500V Min.
 Insertion & Extraction Force : 1Kg. Min.
 Contact Resistance at 1A DC : 5mΩ Max.
 Insulation Resistance at 500V DC : 100MΩ Min.
 Voltage Drop : 20mV Max.
 Temperature Rise : 50°C Max.
 Molded Parts : Nylon UL 94V-0
 Terminals : Brass with Tin Plated
 Suitable Wire Gauge : #16 AWG UL 1015



Tolerances : Unless Otherwise Specified	
Dimension	Critical To Function
< 1	+/- 0.02
1 ~ 8	+/- 0.1
8 ~ 24.995	+/- 0.15
25 ~ 99.99	+/- 0.2
Angles	+/- 1°
Rev	EN
93092401	Modify the tolerance
	Dwg Kao
	Ckd Chyi
	Appd Ku
	Date 2004/9/24

Material		Drawn		Title: Fuse Tap	
Finish		Check		A4	
Unless Otherwise Specified		Engr		GTQD-HLD-1829-1103-400	
Dimensions are mm (inch)		Appd		B	
Tolerances:				Dwg Size	
.x = 1.0 (.04)				Sht 1 of 1	
.xx = 0.5 (.02)				Rev	
.xxx = 0.25 (.010)					
Model File Name : Fuse Tap for Low Profile Mini Blade Fuse					
Drawing File Name : GTQD-HLD-1829-1103-400					
Part Number : 1829 1103 400					
Date: 2011/12/30					

GLORYTECH TECHNOLOGY CO., LTD.