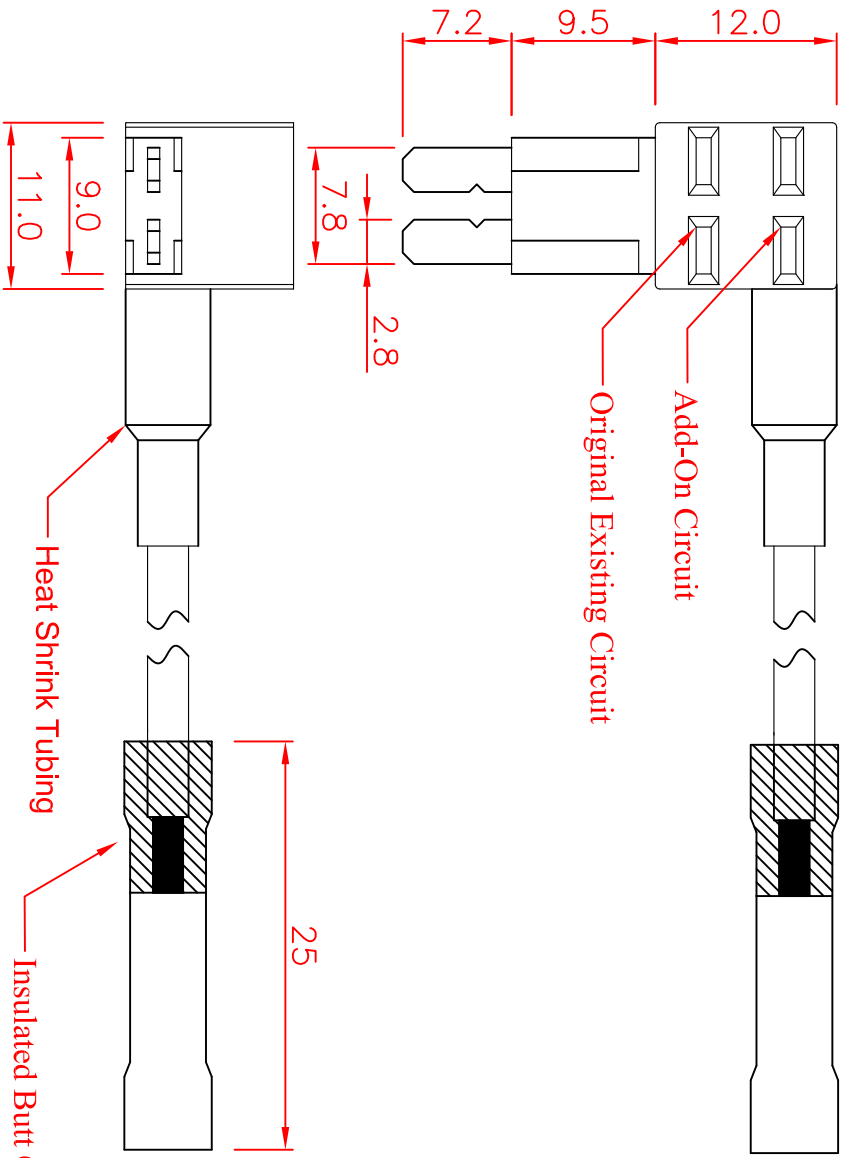
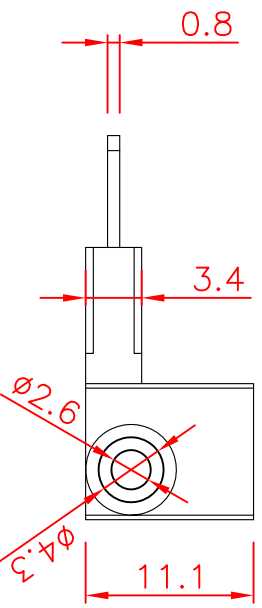


#18-UL1015 Red Wire—135mm(5.3")



SPECIFICATIONS:

- Suitable Rated Current : Maximum Installation Rating
- Existing Circuit : 30A
- Add-on Circuit : 15A
- Dielectric Strength for 60 seconds : AC1500V Min.
- Insertion & Extraction Force : 1Kg. Min.
- Contact Resistance at 1A DC : 5mΩ Max.
- Insulation Resistance at 500V DC : 100MΩ Min.
- Voltage Drop : 20mV Max.
- Temperature Rise : 50°C Max.
- Molded Parts : Nylon PA66 UL 94V-0,Black
- Terminals : Brass with Tin Plated
- Wire : #18 AWG UL 1015 Red Wire, End With Insulated Crimp-T Type coupler Blue Butt Connector.
- **Other color option is available for "Molded Parts" and "Wire"



GLORYTECH TECHNOLOGY CO., LTD.

Tolerances : Unless Otherwise Specified		Critical To Function		General	
Dimension	< 1		+/- 0.02		+/- 0.03
	1 ~ 8		+/- 0.1		+/- 0.2
	8 ~ 24.995		+/- 0.15		+/- 0.25
	25 ~ 99.99		+/- 0.2		+/- 0.3
Angles			+/- 1°		+/- 5°

Rev	EN	Description	Dwg	Ckd	Appd	Date
B	93092401	Modify the tolerance	Kao	Chyi	Ku	2004/9/24

Material		Finish		Title:		Dwg Size		Rev
Drawn	Check	Engr	Appd	Tiny Fuse (Micro 2) Tap		A4		B
Unless Otherwise Specified Dimensions are mm (inch)				Tiny Fuse (Micro 2) Tap		GTQD-HLD-1829-0905-400		
Tolerances:				Title:		Dwg Size		
.x = 1.0 (.04)				Tiny Fuse (Micro 2) Tap		Sht 1 of 1		
.xx = 0.5 (.02)				(Left Side Insert Fuse)		1 1		
.xxx = 0.25 (.010)				Title:		Date:		
Scale: 2:1				Title:		Date:		
Model File Name : Fuse Tap for Tiny Blade Fuse ; #18 AWG Wire ; Left Side Insert				Title:		Date:		
Drawing File Name : GTQD-HLD-1829-0905-400				Title:		Date:		
Part Number : 1829 0905 400				Title:		Date:		