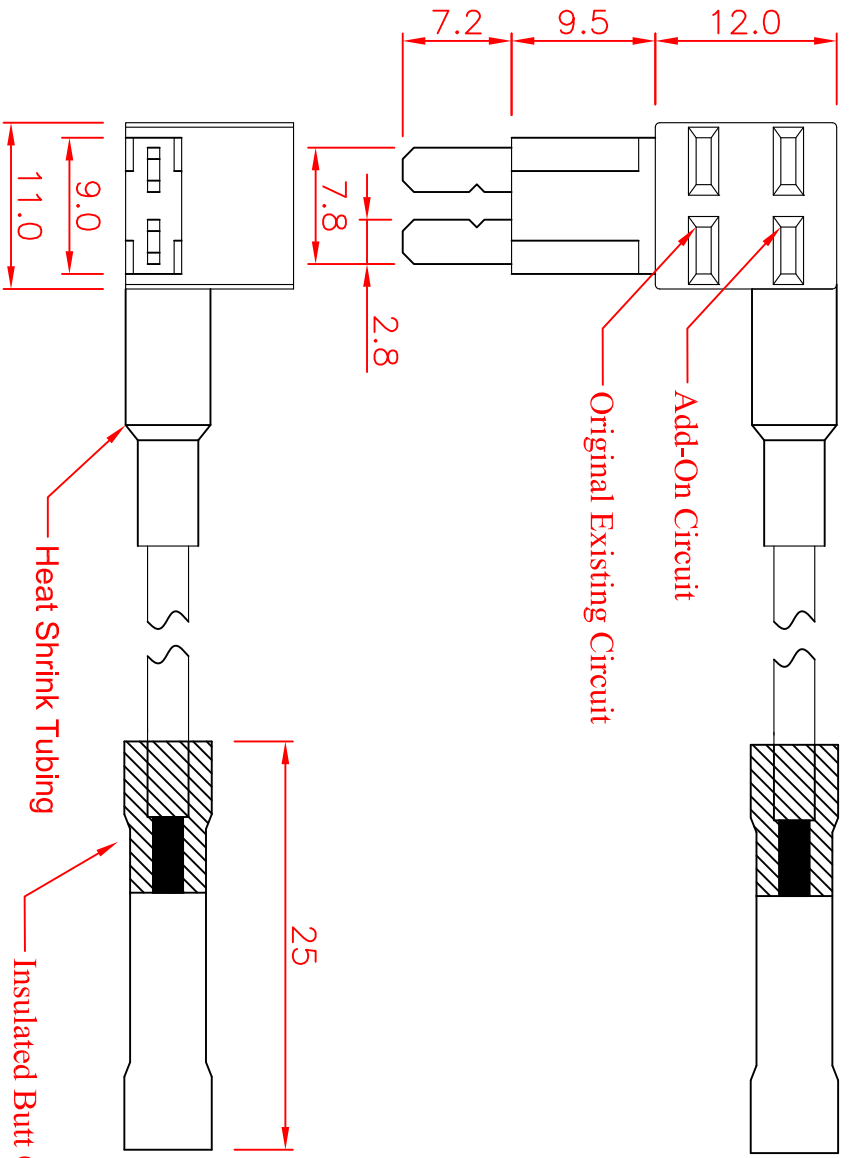
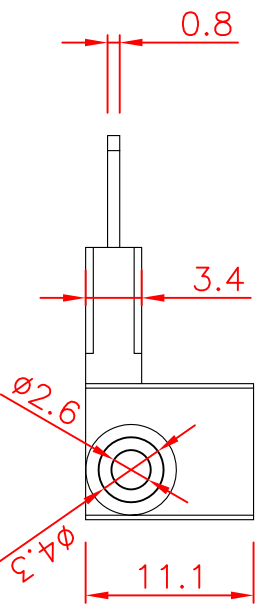


#14-UL1015 Red Wire-135mm(5.3")



SPECIFICATIONS :

- Suitable Rated Current : Maximum Installation Rating
- Existing Circuit : 30A
- Add-on Circuit : 25A
- Dielectric Strength for 60 seconds : AC1500V Min.
- Insertion & Extraction Force : 1Kg. Min.
- Contact Resistance at 1A DC : 5mΩ Max.
- Insulation Resistance at 500V DC : 100MΩ Min.
- Voltage Drop : 20mV Max.
- Temperature Rise : 50°C Max.
- Molded Parts : Nylon PA66 UL 94V-0, Black
- Terminals : Brass with Tin Plated
- Wire : #14 AWG UL 1015 Red Wire, End With Insulated Crimp-Type coupler Blue Butt Connector
- **Other color option is available for "Molded Parts" and "Wire"



GLORYTECH TECHNOLOGY CO., LTD.

Tolerances : Unless Otherwise Specified	
Dimension	Critical To Function
< 1	+/- 0.02
1 ~ 8	+/- 0.1
8 ~ 24.995	+/- 0.15
25 ~ 99.99	+/- 0.2
Angles	+/- 1°

Rev	EN	Description	Dwg	Ckd	Appd	Date
B	93092401	Modify the tolerance	Kao	Chyi	Ku	2004/9/24

Material		Finish		Title:	
Drawn	Check	Engr	Appd	Tiny Fuse (Micro 2) Tap	
Unless Otherwise Specified Dimensions are mm (inch)				(Left Side Insert Fuse)	
Tolerances:				A4	
.x = 1.0 (.04)				GTQD-HLD-1829-0903-400	
.xx = 0.5 (.02)				A4	
.xxx = 0.25 (.010)				GTQD-HLD-1829-0903-400	
Model File Name : Fuse Tap for Tiny Blade Fuse ; #14 AWG Wire ; Left Side Insert		Scale: 2:1		Dwg Size	Sht 1 of 1
Drawing File Name : GTQD-HLD-1829-0903-400					
Part Number : 1829 0903 400				Date:	2013/9/4
				Rev	B