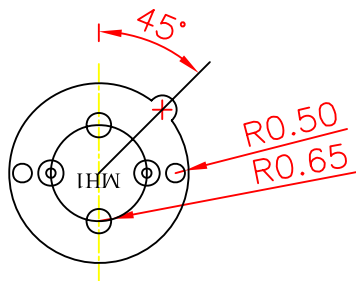
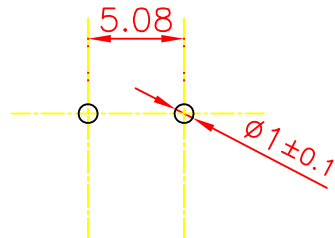


MOUNTING HOLES



SPECIFICATIONS:

- Suitable Rated Current 250V : 1.6W/6.3A Max.
- Contact Resistance at 1A DC : 5mΩ Max.
- Insertion & Extraction Force : 1Kg. Min. / 0.6Kg. Max.
- Molded Parts : Thermoplastic, 94V0, 3.0mm Height
- Terminals : Copper Alloy, Solderable, Tinned
- Approval : UL Recognized E256971
- Soldering Heat Resistance : 280°C 10sec. Max.(Wave)

Tolerances : Unless Otherwise Specified		
Dimension	Critical To Function	General
< 8	+/- 0.1	+/- 0.2
8 ~ 24.995	+/- 0.15	+/- 0.25
25 ~ 99.99	+/- 0.2	+/- 0.3
Angles	+/- 1°	+/- 5°

Rev	EN	Description	Dwg	Ckd	Appd	Date
B	93092401	Modify the tolerance	Kao	Chyi	Ku	2004/9/24
C	94120605	圖面修改	Chris	Bruce	Chyi	2005/12/6

Material		Drawn	GLORYTECH TECHNOLOGY CO., LTD.			
Finish		Check	Title:		A4	C
		Engr	Fuse Holder			
		Appd			GTQD-HLD-1816-0801	
Unless Otherwise Specified Dimensions are mm (inch) Tolerances: .x = 1.0 (.04) .xx = 0.5 (.02) .xxx = 0.25 (.010)			Scale:	2.5 : 1	Dwg Size	Sht 1 of 1
Model File Name : Fuse Holder for Subminiature Fuse (MH1)						
Drawing File Name : GTQD-HLD-1816-0801						
Part Number : 1816 0801 400				Date:	2005/12/6	