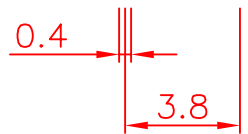
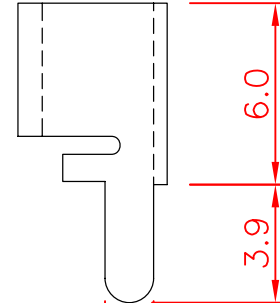
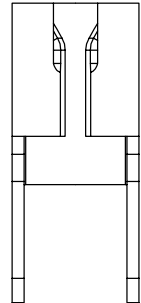


SPECIFICATIONS:

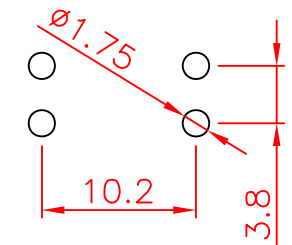
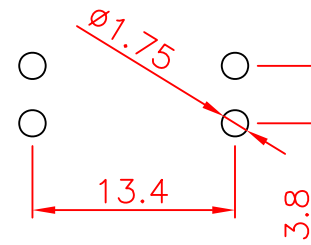
Metal Material : Phosphor Bronze
 Material Thickness : 0.4t
 Suitable Rated Current : 30A Max.
 Finishing : Tin Plated



Mounting Detail

Blade Fuse &
Low Profile Blade Fuse

Mini Blade Fuse



Tolerances : Unless Otherwise Specified		
Dimension	Critical To Function	General
< 1	+/- 0.02	+/- 0.03
1 ~ 8	+/- 0.1	+/- 0.2
8 ~ 24.995	+/- 0.15	+/- 0.25
25 ~ 99.99	+/- 0.2	+/- 0.3
Angles	+/- 1°	+/- 5°

Rev	EN	Description	Dwg	Ckd	Appd	Date
B	93092401	Modify the tolerance	Kao	Chyi	Ku	2004/9/24

Material						GLORYTECH TECHNOLOGY CO., LTD.							
Material		Drawn				Title:		A4		GTQD-CLP-4113-1104		B	
		Check											
Finish		Engr				P.C.B. Mount Fuse Clip		Dwg Size		Sht 1 of 1		Rev	
		Appd											
Unless Otherwise Specified Dimensions are mm (inch) Tolerances: .x = 1.0 (.04) .xx = 0.5 (.02) .xxx = 0.25 (.010)						Scale:		4:1					
Model File Name : P.C.B. Mount Fuse Clip for Blade/Mini Blade/LP Blade Fuses													
Drawing File Name : GTQD-CLP-4113-1104													
Part Number : 4113 1104 400						Date:		2012/5/25					