

P.C. Board Mount Fuse Clips

Part No. **41130507424**



Specifications

Electrical:

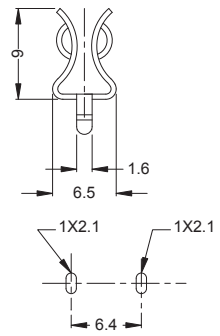
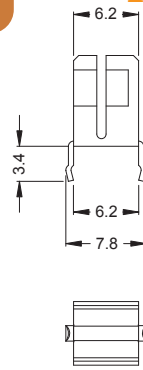
Metal Material	Phosphor Bronze
Material Thickness (mm)	0.4t
Suitable Rated Current	10A Max.
Finishing	Bright Tin Plated
Style	Ear Type

* Other Finishing & Material Available Upon Request

* Lead (Pb) Free Plating Available Upon Request

RoHS

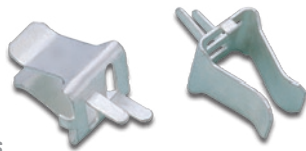
For 5 mm Diameter Fuses



MOUNTING HOLES

Scale: mm

Part No. **41110506424**



Specifications

Electrical:

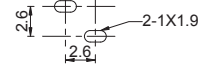
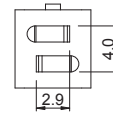
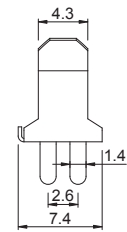
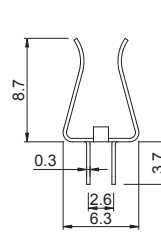
Metal Material	Spring Bronze
Material Thickness (mm)	0.3t
Suitable Rated Current	6.3A Max.
Finishing	Bright Tin Plated
Style	Ear Type

* Other Finishing & Material Available Upon Request

* Lead (Pb) Free Plating Available Upon Request

RoHS

For 5 mm Diameter Fuses



MOUNTING HOLES

Scale: mm

Part No. **41110501424**



Specifications

Electrical:

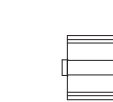
Metal Material	Spring Bronze
Material Thickness (mm)	0.4t
Suitable Rated Current	10A Max.
Finishing	Bright Tin Plated
Style	Ear Type

* Other Finishing & Material Available Upon Request

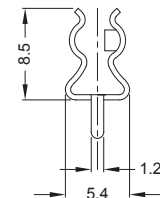
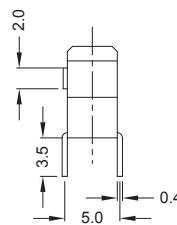
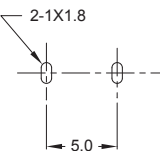
* Lead (Pb) Free Plating Available Upon Request

RoHS

For 5 mm Diameter Fuses

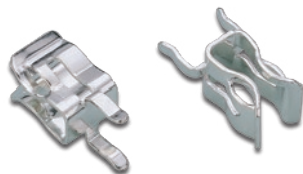


MOUNTING HOLES



Scale: mm

Part No. **41130401424**



Specifications

Electrical:

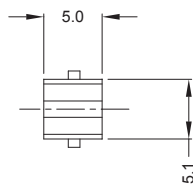
Metal Material	Phosphor Bronze
Material Thickness (mm)	0.4t
Suitable Rated Current	10A Max.
Finishing	Bright Tin Plated
Style	Ear Type

* Other Finishing & Material Available Upon Request

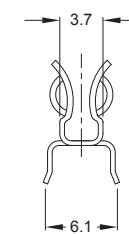
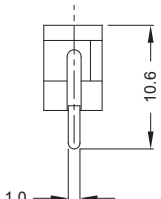
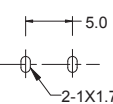
* Lead (Pb) Free Plating Available Upon Request

RoHS

For 4.5 & 5mm Diameter Fuses



MOUNTING HOLES



Scale: mm