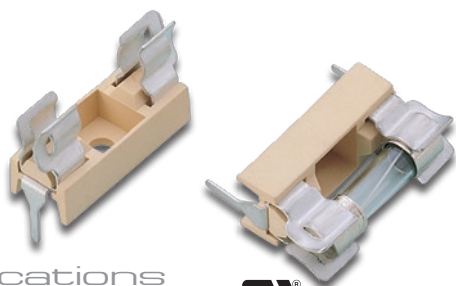


Fuse Blocks

Part No. **19390501424**



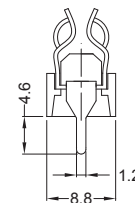
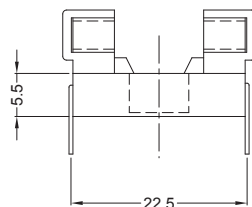
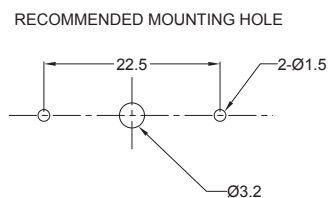
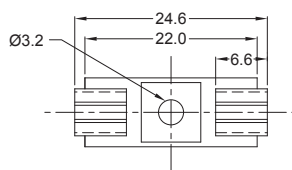
For **5x20mm Fuse**
For 5x20mm Fuse

Specifications

Electrical:		RoHS Pending
Suitable Rated Current	6.3A Max.	
Dielectric Strength For 60 Seconds	AC 3000 V Min.	
Insertion & Extraction Force	1.5 Kg. Min.	
Contact Resistance At 1A DC	5mΩ Max.	
Insulation Resistance At 500V DC	100MΩ Min.	
Voltage Drop	15mV Max.	
Temperature Rise	60°C Max.	
Molded Parts	Nylon With Glass Fiber 94V0	
Terminals	Brass	

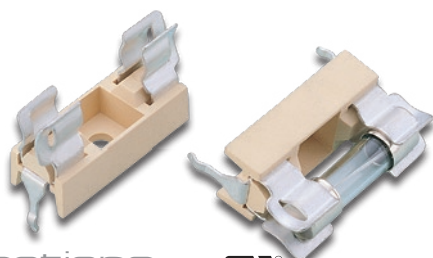
* Lead (Pb) Free Plating Available Upon Request

RoHS



Scale: mm

Part No. **19390503424**



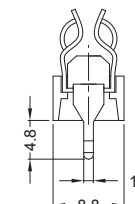
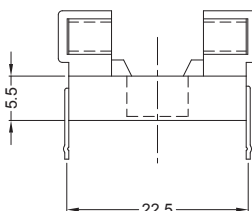
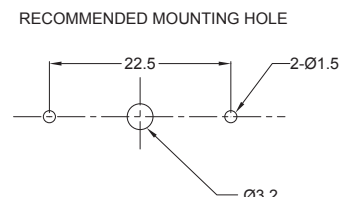
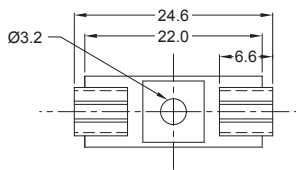
For **5x20mm Fuse**
For 5x20mm Fuse

Specifications

Electrical:		RoHS Pending
Suitable Rated Current	6.3A Max.	
Dielectric Strength For 60 Seconds	AC 3000 V Min.	
Insertion & Extraction Force	1.5 Kg. Min.	
Contact Resistance At 1A DC	5mΩ Max.	
Insulation Resistance At 500V DC	100MΩ Min.	
Voltage Drop	15mV Max.	
Temperature Rise	60°C Max.	
Molded Parts	Nylon With Fiber Glass 94V0	
Terminals	Brass, Kink Type	

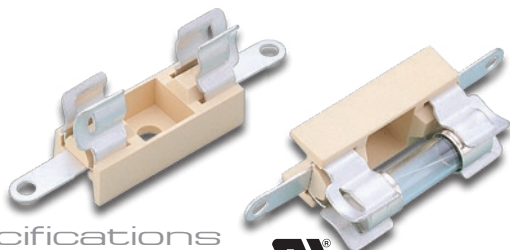
* Lead (Pb) Free Plating Available Upon Request

RoHS



Scale: mm

Part No. **19390505424**



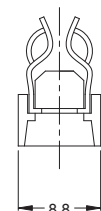
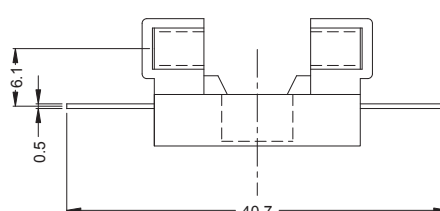
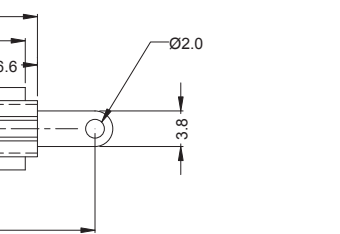
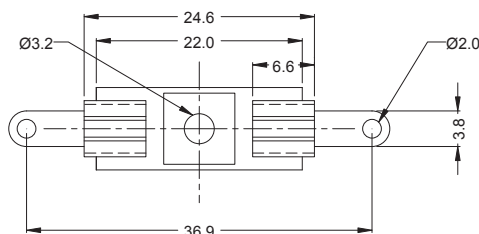
For **5x20mm Fuse**
For 5x20mm Fuse

Specifications

Electrical:		RoHS Pending
Suitable Rated Current	6.3A Max.	
Dielectric Strength For 60 Seconds	AC 3000 V Min.	
Insertion & Extraction Force	1.5 Kg. Min.	
Contact Resistance At 1A DC	5mΩ Max.	
Insulation Resistance At 500V DC	100MΩ Min.	
Voltage Drop	15mV Max.	
Temperature Rise	60°C Max.	
Molded Parts	Nylon With Glass Fiber 94V0	
Terminals	Brass	

* Lead (Pb) Free Plating Available Upon Request

RoHS



Scale: mm