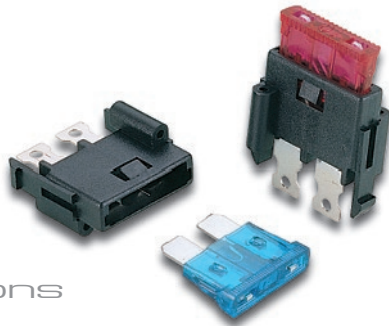


Mounted Fuse Block

Part No. **18291905400**

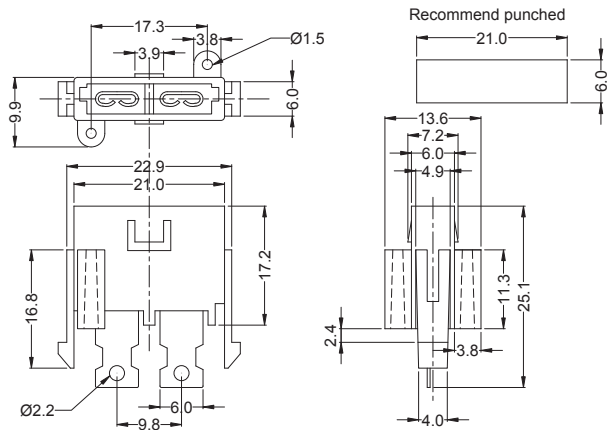
For Blade Type Fuses
For Blade Type Fuses



Specifications

Electrical:

| | |
|------------------------------------|----------------------------|
| Suitable Rated Current | 30A Max. |
| Dielectric Strength For 60 Seconds | AC 1500 V Min. |
| Insertion & Extraction Force | 1 Kg. Min. |
| Contact Resistance At 1A DC | 5mΩ Max. |
| Insulation Resistance At 500V DC | 100MΩ Min. |
| Voltage Drop | 20mV Max. |
| Temperature Rise | 50°C Max. |
| Molded Parts | Nylon With Glass Fiber |
| Terminals | Brass |
| Style | Snap-In And Screw Fix Type |



Scale: mm

Part No. **18291914400**

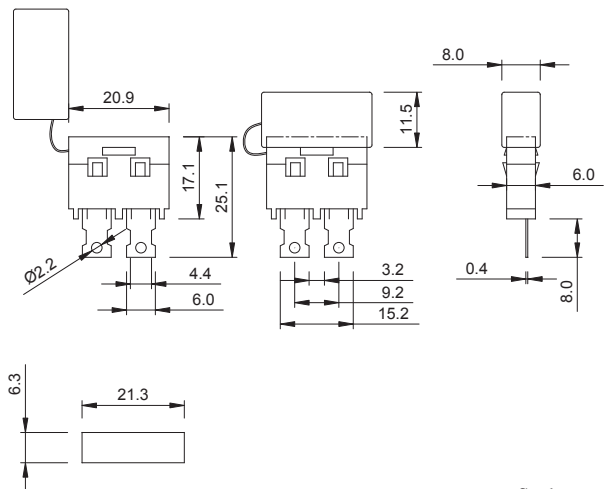
For Blade Type Fuses
For Blade Type Fuses



Specifications

Electrical:

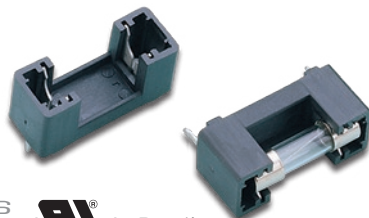
| | |
|------------------------------------|----------------------------|
| Suitable Rated Current | 30A Max. |
| Dielectric Strength For 60 Seconds | AC 1500 V Min. |
| Insertion & Extraction Force | 1 Kg. Min. |
| Contact Resistance At 1A DC | 5mΩ Max. |
| Insulation Resistance At 500V DC | 100MΩ Min. |
| Voltage Drop | 20mV Max. |
| Temperature Rise | 50°C Max. |
| Molded Parts | Nylon With Glass Fiber |
| Terminals | Brass |
| Style | Quick Insert Terminal Type |



Scale: mm

Part No. **19370504424**

For 5x20mm Fuses
For 5x20mm Fuses



Specifications

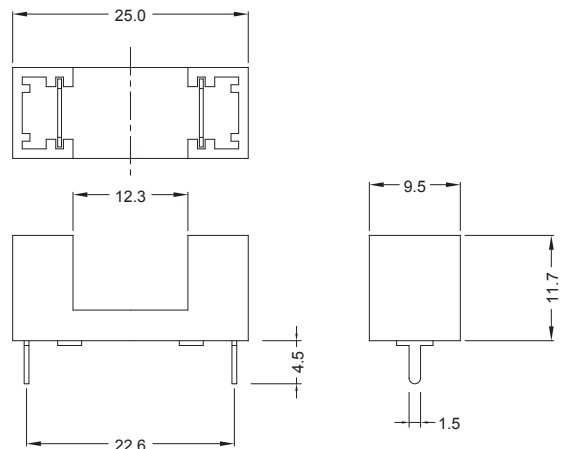
Electrical:

RoHS Pending

| | |
|------------------------------------|----------------|
| Suitable Rated Current | 6.3A Max. |
| Dielectric Strength For 60 Seconds | AC 2000 V Min. |
| Insertion & Extraction Force | 1 Kg. Min. |
| Contact Resistance At 1A DC | 5mΩ Max. |
| Insulation Resistance At 500V DC | 100MΩ Min. |
| Voltage Drop | 20mV Max. |
| Temperature Rise | 50°C Max. |
| Molded Parts | Nylon 94V0 |
| Terminals | Brass |

* Lead (Pb) Free Plating Available Upon Request

RoHS



Scale: mm