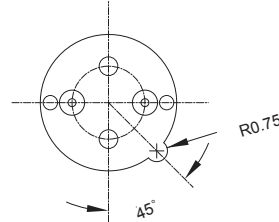
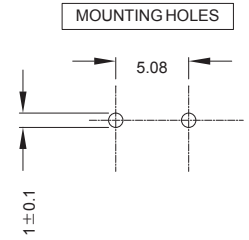
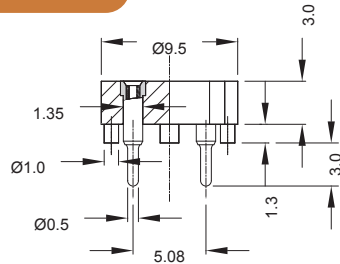
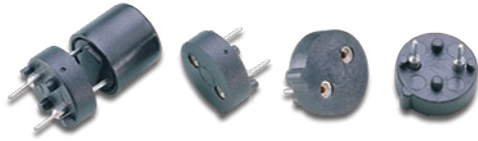


Holder For Subminiature Fuse 1711~1714 Series

Part No. **18160801400**



Scale: mm

Specifications

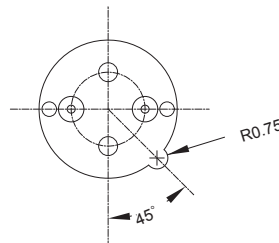
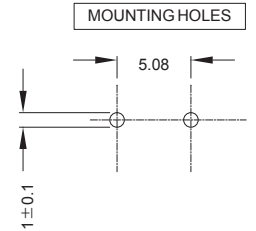
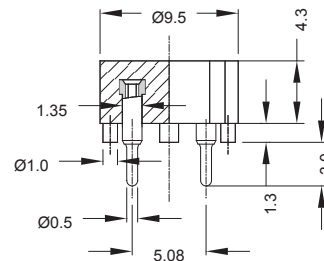
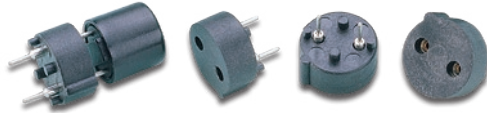
Electrical:

Suitable Rated Current 250V	1.6W / 6.3A Max.
Contact Resistance At 1A DC	5mΩ Max.
Insertion & Extraction Force	1 Kg. Min. / 0.6Kg. Max.
Molded Parts	Thermoplastic, 94V0, 3.0mm Height
Terminals	Copper Alloy, Solderable, Tinned

RoHS

CAUS Pending

Part No. **18160802400**



Scale: mm

Specifications

Electrical:

Suitable Rated Current 250V	1.6W / 6.3A Max.
Contact Resistance At 1A DC	5mΩ Max.
Insertion & Extraction Force	1 Kg. Min. / 0.6Kg. Max.
Molded Parts	Thermoplastic, 94V0, 4.3mm Height
Terminals	Copper Alloy, Solderable, Tinned

RoHS

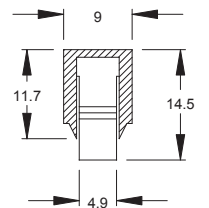
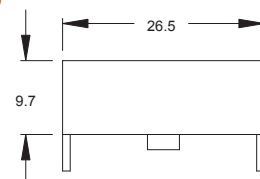
CAUS Pending

Cover For Fuse Block

Part No. **66050501023**

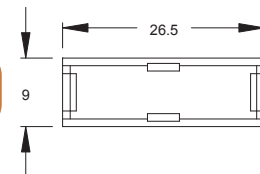
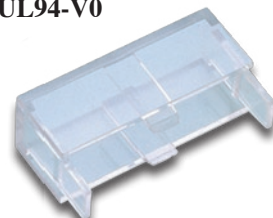


Cover For Fuse Block Part No. 19390503, 19390501 Series
Material: PS



Part No. **66020501023**

Cover For Fuse Block Part No. 19390503, 19390501 Series
Material: PC UL94-V0



Scale: mm