

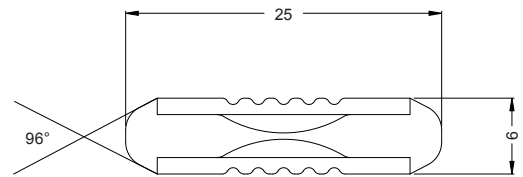
Automotive Fuse

European Car Use

Part No. **1538/1561/1562 series**



- Normal Blow, Low Voltage
- Material: * Insulating Body: Bakelite
* Metal: Brass / Copper
- Fuses Are Color-Coded For Easy Amperage Identification



Scale: mm

Specifications

Opening Time / Pre-arcing Time:

In	1.5 In	2.5 In
5-40A	Min.	Max.
	1 Hour	60 s

Ordering Information:

Continental Fuse DIN-72581

Part Number	Ampere (A)	Voltage (VDC)	Body Color
15381500200	5 A	32 V	● Yellow
15381800200	8 A	32 V	○ White
15382160200	16 A	32 V	● Red
15382250200	25 A	32 V	● Blue

Continental Fuse FIAT 9.91806

Part Number	Ampere (A)	Voltage (VDC)	Body Color
15611500200	5 A	32 V	● Yellow
15611800200	8 A	32 V	○ Gray
15612100200	10 A	32 V	○ White
15612160200	16 A	32 V	● Green
15612250200	25 A	32 V	● Brown
15612400200	40 A	32 V	● Red

Continental Fuse B.N.A-709

Part Number	Ampere (A)	Voltage (VDC)	Body Color
15621500200	5 A	32 V	● Violet
15621800200	8 A	32 V	● Blue
15622100200	10 A	32 V	● Green
15622160200	16 A	32 V	● Yellow
15622250200	25 A	32 V	● Red