

Safety *ez* FUSE

New !! Patented
Lead (Pb) Free

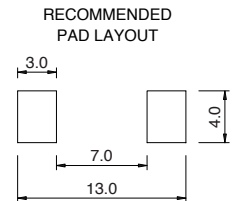
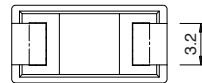
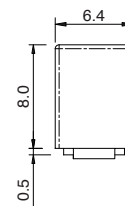
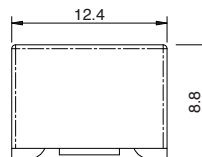
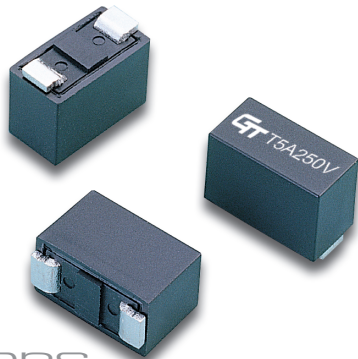


Part No. **1343** series

SMD Type



- Slow Blow (T), Surge Withstand
- Size: 12(L) x 6(W) x 8(H) mm
- Voltage: 250V and Less
- Material: * Insulating Body: Fiberglass Reinforced Plastic, UL94V0 Flame Resistant
- * Element: Silver Alloy
- * Terminal: Copper With Tin Plated, 0.8mm Thickness
- Option: Gold or Silver Plated Available Upon Request
- P.C. Board Surface Mount
- Shock Safe Casing
- High Vibration Resistant
- Application: TV, VCR, Monitor, Adapter, Communication Equipments, Protection and Safety For All Other Small Equipment
- Replace Conventional Cartridge Fuses
- Ampere Rating: 50mA~20A
- Standard: IEC 60127-4(UMF)
- Low Internal Resistant
- Designed And Patented By **GLORYTECH**



Scale: mm

Specifications

Opening Time / Pre-arcing Time:

In	1.0 In	1.25 In	2.0 In	10 In
50mA-20A	Carry	Min.	Max.	Min.
		60 min.	120 s	100 ms

Ordering Information:

Part Number	Ampere (A)	Voltage (V)	Voltage Drop Max. (mV)	Breaking Capacity (AC)	I ² t Min. (A ² s)	MS	VDE	UL	PS
13430050440	50 mA	250 V	1000	500A 250V	0.013				Pending
13430063440	63 mA	250 V	800	500A 250V	0.021				Pending
13430080440	80 mA	250 V	650	500A 250V	0.032				Pending
13430100440	100 mA	250 V	500	500A 250V	0.05				Pending
13430125440	125 mA	250 V	450	500A 250V	0.78				Pending
13430160440	160 mA	250 V	400	500A 250V	0.128				Pending
13430200440	200 mA	250 V	300	500A 250V	0.2				Pending
13430250440	250 mA	250 V	220	500A 250V	0.312				Pending
13430315440	315 mA	250 V	210	500A 250V	0.422				Pending
13430400440	400 mA	250 V	200	500A 250V	0.96				Pending
13430500440	500 mA	250 V	190	500A 250V	1.4				Pending
13430630440	630 mA	250 V	180	500A 250V	2.6				Pending
13430800440	800 mA	250 V	160	500A 250V	2.9				Pending
13431100440	1 A	250 V	140	500A 250V	6.95				Pending
13431125440	1.25 A	250 V	130	500A 250V	10				Pending
13431160440	1.6 A	250 V	120	500A 250V	15				Pending
13431200440	2 A	250 V	100	500A 250V	20				Pending
13431250440	2.5 A	250 V	100	500A 250V	28				Pending
13431315440	3.15 A	250 V	100	500A 250V	39				Pending
13431400440	4 A	250 V	100	500A 250V	70				Pending
13431500440	5 A	250 V	100	500A 250V	130				Pending
13431630440	6.3 A	250 V	100	500A 250V	198				Pending
13431700440	7 A	250 V	90	500A 250V	245				Pending
13431800440	8 A	250 V	90	500A 250V	320				Pending
13432100440	10 A	250 V	90	500A 250V	500				Pending
13432120440	12 A	250 V	90	500A 250V	720				Pending
13432150440	15 A	250 V	90	500A 250V	1150				Pending
13432160440	16 A	250 V	85	500A 250V	1300				Pending
13432200440	20 A	250 V	85	500A 250V	2100				Pending