

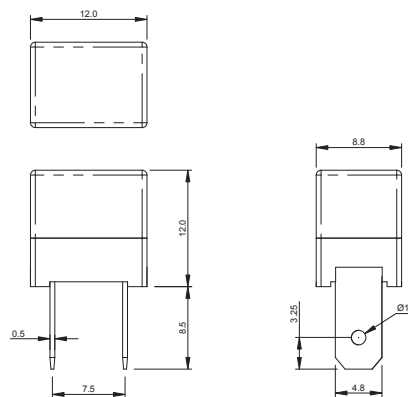
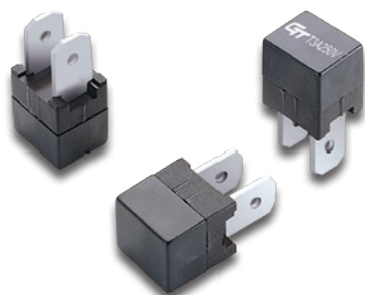


Part No. **1321** series

Vertical Type



- Slow Blow (T), Surge Withstand
- Size: 12(L) x 9(W) x 12(H) mm
- Voltage: 250V and Less
- Material: * Insulating Body: Fiberglass Reinforced Plastic, UL94V0 Flame Resistant
- * Element: Silver Alloy
- * Terminals: 3/16" (4.8 mm) Copper With Tin Plated, 0.5mm Thickness
- Option: Gold or Silver Plated Available Upon Request
- Direct Connect To Female Terminal, Terminal Version For Easy Replacement
- Shock Safe Casing
- High Vibration Resistant
- Application: TV, VCR, Monitor, Adapter, Communication Equipments, Protection and Safety For All Other Small Equipment
- Replace Conventional Cartridge Fuses
- Ampere Rating: 50mA~30A
- Standard: IEC 60127-4(UMF)
- Low Internal Resistant
- Designed And Patented By **GLORYTECH**



Scale: mm

Specifications

Opening Time / Pre-arcing Time:

In	1.0 In	1.25 In	2.0 In	10 In
50mA-30A	Carry	Min. 60 min.	Max. 120 s	Min. 10 ms Max. 100 ms

Ordering Information:

Part Number	Ampere (A)	Voltage (V)	Voltage Drop Max. (mV)	Breaking Capacity (AC)	I ² t Min. (A ² s)
13210050440	50 mA	250 V	1000	500A 250V	0.013
13210063440	63 mA	250 V	800	500A 250V	0.21
13210080440	80 mA	250 V	650	500A 250V	0.032
13210100440	100 mA	250 V	550	500A 250V	0.05
13210125440	125 mA	250 V	450	500A 250V	0.078
13210160440	160 mA	250 V	400	500A 250V	0.128
13210200440	200 mA	250 V	300	500A 250V	0.2
13210250440	250 mA	250 V	220	500A 250V	0.312
13210315440	315 mA	250 V	210	500A 250V	0.422
13210400440	400 mA	250 V	200	500A 250V	0.96
13210500440	500 mA	250 V	190	500A 250V	1.4
13210630440	630 mA	250 V	180	500A 250V	2.6
13210800440	800 mA	250 V	160	500A 250V	2.9
13211100440	1 A	250 V	140	500A 250V	6.95
13211125440	1.25 A	250 V	130	500A 250V	10
13211160440	1.6 A	250 V	120	500A 250V	15
13211200440	2 A	250 V	100	500A 250V	20
13211250440	2.5 A	250 V	100	500A 250V	28
13211315440	3.15 A	250 V	100	500A 250V	39
13211400440	4 A	250 V	100	500A 250V	70
13211500440	5 A	250 V	100	500A 250V	130
13211630440	6.3 A	250 V	100	500A 250V	198
13211700440	7 A	250 V	90	500A 250V	245
13211800440	8 A	250 V	90	500A 250V	320
13212100440	10 A	250 V	90	500A 250V	500
13212120440	12 A	250 V	90	500A 250V	720
13212150440	15 A	250 V	90	500A 250V	1150
13212160440	16 A	250 V	85	500A 250V	1300
13212200440	20 A	250 V	85	500A 250V	2100
13212250440	25 A	250 V	80	500A 250V	3000
13212300440	30 A	250 V	80	500A 250V	4700