

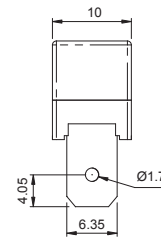
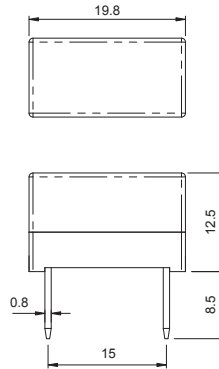


Part No. **1301** series

Vertical Type



- Slow Blow (T), Surge Withstand
- Size: 20(L) x 10(W) x 12.5(H)mm
- Voltage: 250V and Less
- Material: * Insulating Body: Fiberglass Reinforced Plastic, UL94V0 Flame Resistant
- * Element: Silver Alloy
- * Terminals: 0.25" (6.35mm) Copper With Tin Plated, 0.8mm Thickness
- Option: Gold or Silver Plated Available Upon Request
- Direct Connect To Female Terminal, Terminal Version For Easy Replacement
- Shock Safe Casing
- High Vibration Resistant
- Application: TV, VCR, Monitor, Adapter, Communication Equipments, Protection and Safety For All Other Small Equipment
- Replace Conventional Cartridge Fuses
- Ampere Rating: 800mA~30A
- Standard: IEC60127-4(UMF)
- Low Internal Resistant
- Designed And Patented By **GLORYTECH**



Scale: mm

Specifications

Opening Time / Pre-arcing Time:

| In | 1.0 In | 1.25 In | 2.0 In | 10 In | |
|-----------|--------|-----------------|---------------|---------------|----------------|
| 800mA-30A | Carry | Min. 60 min. | Max. 120 s | Min. 10 ms | Max. 100 ms |

Ordering Information:

| Part Number | Ampere (A) | Voltage (V) | Voltage Drop Max. (mV) | Breaking Capacity (AC) | I _t Min. (A ² s) | MS | VDE | D.E. | RU | US | PS |
|-------------|------------|-------------|------------------------|------------------------|--|----|-----|------|----|----|---------|
| 13010800440 | 800 mA | 250 V | 130 | 500A 250V | 11 | | | | | | Pending |
| 13011100440 | 1 A | 250 V | 120 | 500A 250V | 19.2 | | | | | | Pending |
| 13011125440 | 1.25 A | 250 V | 110 | 500A 250V | 27.2 | | | | | | Pending |
| 13011160440 | 1.6 A | 250 V | 100 | 500A 250V | 44 | | | | | | Pending |
| 13011200440 | 2 A | 250 V | 90 | 500A 250V | 92.5 | | | | | | Pending |
| 13011250440 | 2.5 A | 250 V | 90 | 500A 250V | 138 | | | | | | Pending |
| 13011315440 | 3.15 A | 250 V | 80 | 500A 250V | 206 | | | | | | Pending |
| 13011400440 | 4 A | 250 V | 70 | 500A 250V | 220 | | | | | | Pending |
| 13011500440 | 5 A | 250 V | 60 | 500A 250V | 314 | | | | | | Pending |
| 13011630440 | 6.3 A | 250 V | 50 | 500A 250V | 500 | | | | | | Pending |
| 13011700440 | 7 A | 250 V | 50 | 500A 250V | 600 | | | | | | Pending |
| 13011800440 | 8 A | 250 V | 50 | 500A 250V | 750 | | | | | | Pending |
| 13012100440 | 10 A | 250 V | 50 | 500A 250V | 1000 | | | | | | Pending |
| 13012120440 | 12 A | 250 V | 50 | 500A 250V | 1200 | | | | | | Pending |
| 13012150440 | 15 A | 250 V | 50 | 500A 250V | 1440 | | | | | | Pending |
| 13012160440 | 16 A | 250 V | 50 | 500A 250V | 1650 | | | | | | Pending |
| 13012200440 | 20 A | 250 V | 50 | 500A 250V | 2800 | | | | | | Pending |
| 13012250440 | 25 A | 250 V | 50 | 500A 250V | 3750 | | | | | | Pending |
| 13012300440 | 30 A | 250 V | 50 | 500A 250V | 5500 | | | | | | Pending |